

# Tiger Mono-facial All Black 360-380 Watt

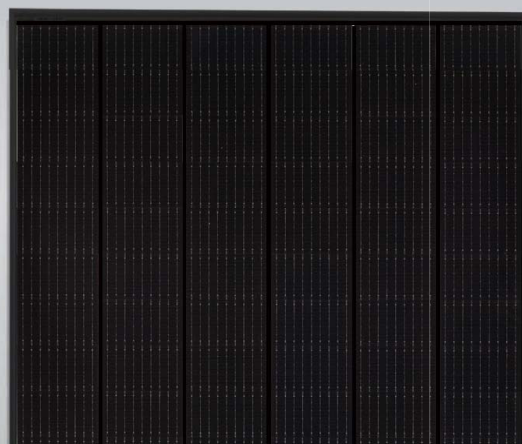
Tiling Ribbon (TR) Technology

ISO9001:2015, ISO14001:2015, ISO45001:2018  
certified factory

IEC61215, IEC61730 certified product

(Made in China)

N-Type



## KEY FEATURES



### TR technology + Half Cell

TR technology with Half cell aims to eliminate the cell gap to increase module efficiency (mono-facial up to 19.91%).



### 9BB instead of 5BB

9BB technology decreases the distance between bus bars and finger grid line which is benefit to power increase.



### Higher lifetime Power Yield

1% first year degradation,  
0.4% linear degradation



### Best Warranty

25 year product warranty,  
30 year linear power warranty



### Better low-light performance

Excellent performance in low-light environments  
(e.g. early morning, dusk, and cloud, etc.)

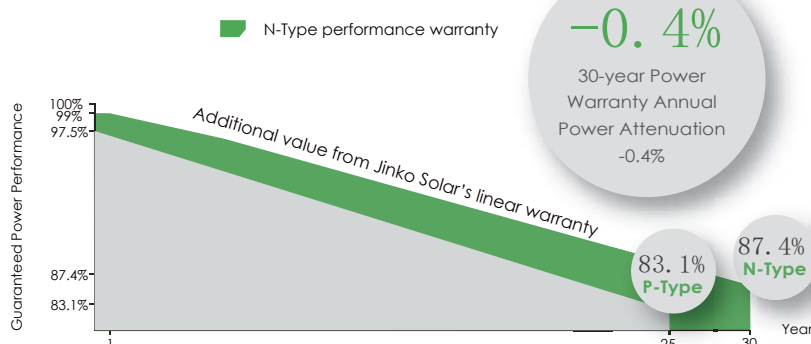


### Severe Weather Resilience

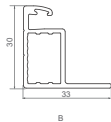
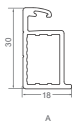
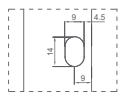
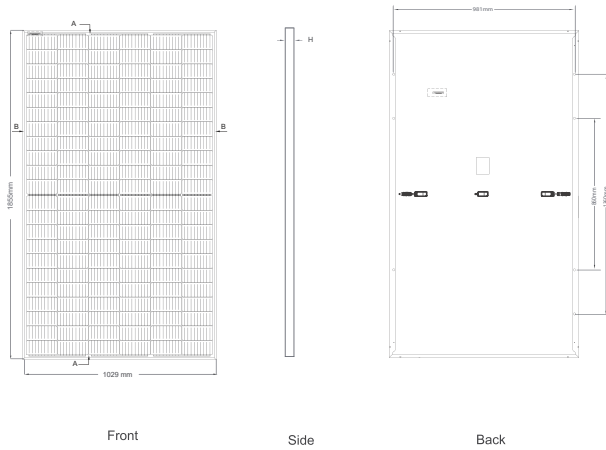
Certified to withstand: wind load (2400 Pascal) and snow load (5400 Pascal).

## LINEAR PERFORMANCE WARRANTY

25 Year Product Warranty 30 Year Linear Power Warranty  
0.4% Annual Degradation Over 30 years



## Engineering Drawings



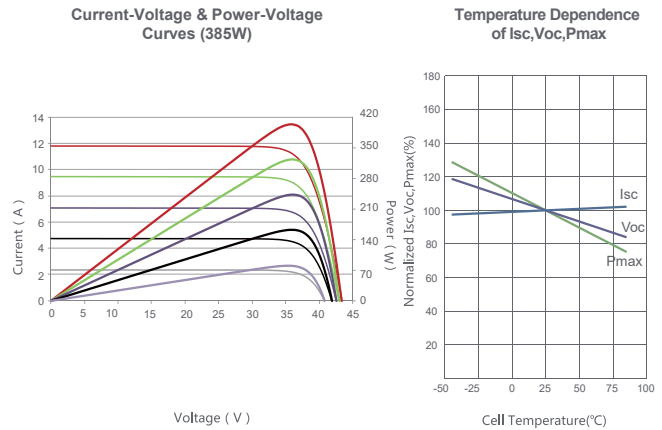
Length:  $\pm 2\text{mm}$   
Width:  $\pm 2\text{mm}$   
Height:  $\pm 1\text{mm}$   
Row Pitch:  $\pm 2\text{mm}$

## Packaging Configuration

( Two pallets = One stack )

35pcs/pallets, 70pcs/stack, 840pcs/ 40'HQ Container

## Electrical Performance & Temperature Dependence



## Mechanical Characteristics

Cell Type	N type Mono-crystalline
No. of cells	132 (2×66)
Dimensions	1855×1029×30mm (73.03×40.51×1.18 inch)
Weight	20.8 kg (45.86 lbs)
Front Glass	3.2mm, Anti-Reflection Coating, High Transmission, Low Iron, Tempered Glass
Frame	Anodized Aluminium Alloy
Junction Box	IP67 Rated
Output Cables	TUV 1×4.0mm <sup>2</sup> (+): 290mm, (-): 145 mm or Customized Length
Connector	1000V: Staubli MC4; JK03M/1B, JK03M2/1B, Jinko PV material
Fire rating	Class C

## SPECIFICATIONS

Module Type	JKM360N-6RL3-B		JKM365N-6RL3-B		JKM370N-6RL3-B		JKM375N-6RL3-B		JKM380N-6RL3-B	
	STC	NOCT	STC	NOCT	STC	NOCT	STC	NOCT	STC	NOCT
Maximum Power (Pmax)	360Wp	268Wp	365Wp	272Wp	370Wp	276Wp	375Wp	280Wp	380Wp	283Wp
Maximum Power Voltage (Vmp)	36.51V	33.93V	36.72V	34.10V	36.93V	34.31V	37.13V	34.52V	37.33V	34.68V
Maximum Power Current (Imp)	9.86A	7.91A	9.94A	7.98A	10.02A	8.04A	10.10A	8.10A	10.18A	8.17A
Open-circuit Voltage (Voc)	44.82V	42.30V	45.03V	42.50V	45.24V	42.70V	45.44V	42.89V	45.64V	43.08V
Short-circuit Current (Isc)	10.44A	8.43A	10.52A	8.50A	10.60A	8.56A	10.68A	8.63A	10.76A	8.69A
Module Efficiency STC (%)	18.86%		19.12%		19.38%		19.65%		19.91%	
Operating Temperature(°C)	-40°C~+85°C									
Maximum system voltage	1000VDC (IEC)      with -V=1500V, without -V=1000V									
Maximum series fuse rating	20A									
Power measurement tolerance	-3%~+3%									
Temperature coefficients of Pmax	-0.34%/°C									
Temperature coefficients of Voc	-0.28%/°C									
Temperature coefficients of Isc	0.048%/°C									
Nominal operating cell temperature (NOCT)	45±2°C									

\* STC: Irradiance 1000W/m<sup>2</sup> Cell Temperature 25°C

AM=1.5

NOCT: Irradiance 800W/m<sup>2</sup> Ambient Temperature 20°C

AM=1.5

Wind Speed 1m/s