

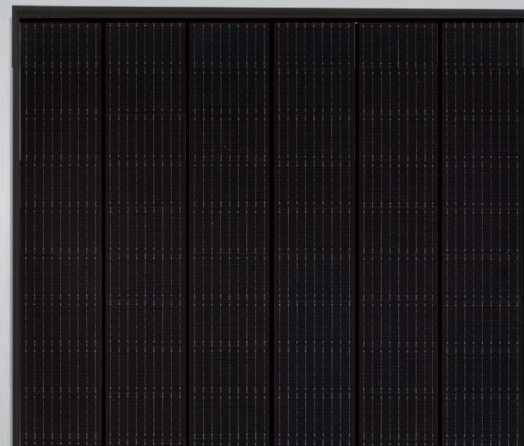
# Tiger Mono-facial All Black

## 340-360 Watt

Tiling Ribbon (TR) Technology

ISO9001:2015, ISO14001:2015, ISO45001:2018  
certified factory

IEC61215, IEC61730 certified product  
(Made in China)



## KEY FEATURES



### TR technology + Half Cell

TR technology with Half cell aims to eliminate the cell gap to increase module efficiency (mono-facial up to 20.68%)



### 9BB instead of 5BB

9BB technology decreases the distance between bus bars and finger grid line which is benefit to power increase.



### Higher lifetime Power Yield

1% first year degradation,  
0.4% linear degradation



### Best Warranty

25 year product warranty,  
30 year linear power warranty



### Better low-light performance

Excellent performance in low-light environments  
(e.g. early morning, dusk, and cloud, etc.)

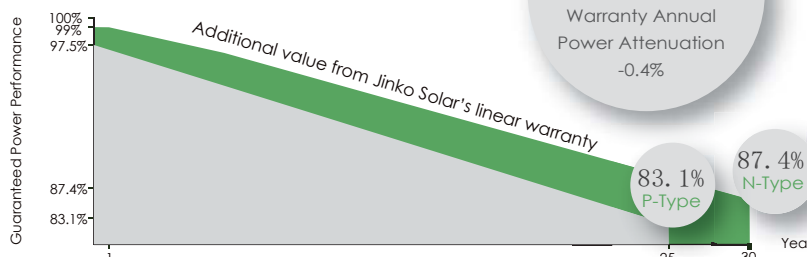


## LINEAR PERFORMANCE WARRANTY

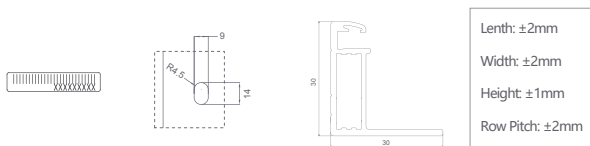
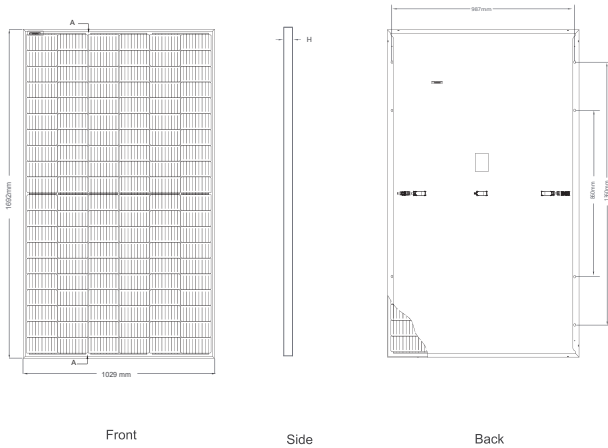
25 Year Product Warranty 30 Year Linear Power Warranty  
0.4% Annual Degradation Over 30 years

■ N-Type performance warranty

**-0.4%**  
30-year Power  
Warranty Annual  
Power Attenuation  
-0.4%



## Engineering Drawings



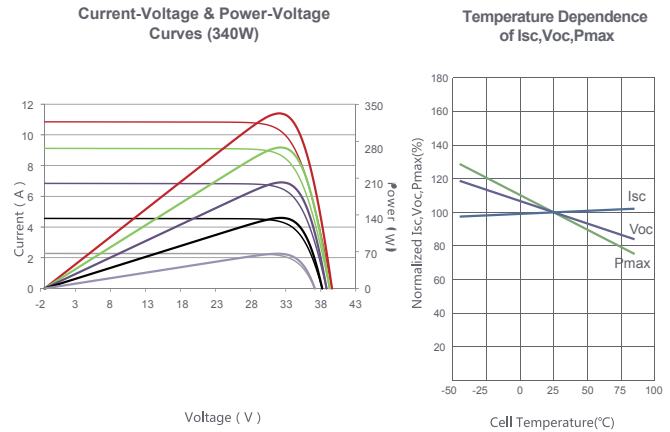
Length:  $\pm 2\text{mm}$   
Width:  $\pm 2\text{mm}$   
Height:  $\pm 1\text{mm}$   
Row Pitch:  $\pm 2\text{mm}$

## Packaging Configuration

(Two pallets = One stack)

35pcs/pallets, 70pcs/stack, 910pcs/ 40'HQ Container

## Electrical Performance & Temperature Dependence



## Mechanical Characteristics

Cell Type	N type Mono-crystalline
No. of cells	120 (2×60)
Dimensions	1692×1029×30mm (66.61×40.51×1.18 inch)
Weight	19.3 kg (42.55 lbs)
Front Glass	3.2mm, Anti-Reflection Coating, High Transmission, Low Iron, Tempered Glass
Frame	Anodized Aluminium Alloy
Junction Box	IP67 Rated
Output Cables	TUV 1×4.0mm <sup>2</sup> (+): 290mm, (-): 145 mm or Customized Length
Connector Type	1000V: Staubli MC4, JK03M/1B, JK03M2/1B, Jinko PV material
Fire Class	Class C

## SPECIFICATIONS

Module Type	JKM340N-6TL3-B		JKM345N-6TL3-B		JKM350N-6TL3-B		JKM355N-6TL3-B		JKM360N-6TL3-B	
	STC	NOCT	STC	NOCT	STC	NOCT	STC	NOCT	STC	NOCT
Maximum Power (Pmax)	340Wp	254Wp	345Wp	257Wp	350Wp	261Wp	355Wp	265Wp	360Wp	268Wp
Maximum Power Voltage (Vmp)	33.73V	31.26V	33.93V	31.41V	34.12V	31.56V	34.30V	31.74V	34.49V	31.88V
Maximum Power Current (Imp)	10.08A	8.11A	10.17A	8.19A	10.26A	8.27A	10.35A	8.34A	10.44A	8.42A
Open-circuit Voltage (Voc)	41.35V	39.03V	41.55V	39.22V	41.74V	39.40V	41.92V	39.57V	42.11V	39.75V
Short-circuit Current (Isc)	10.66A	8.61A	10.75A	8.68A	10.84A	8.76A	10.93A	8.83A	11.02A	8.90A
Module Efficiency STC (%)	19.53%		19.82%		20.10%		20.39%		20.68%	
Operating Temperature(°C)	-40°C~+85°C									
Maximum system voltage					1000VDC (IEC)		with -V=1500V, without -V=1000V			
Maximum series fuse rating	20A									
Power measurement tolerance	-3%~+3%									
Temperature coefficients of Pmax	-0.34%/°C									
Temperature coefficients of Voc	-0.28%/°C									
Temperature coefficients of Isc	0.048%/°C									
Nominal operating cell temperature (NOCT)	45±2°C									

\* STC: Irradiance 1000W/m<sup>2</sup> Cell Temperature 25°C

AM=1.5

NOCT: Irradiance 800W/m<sup>2</sup> Ambient Temperature 20°C

AM=1.5

Wind Speed 1m/s