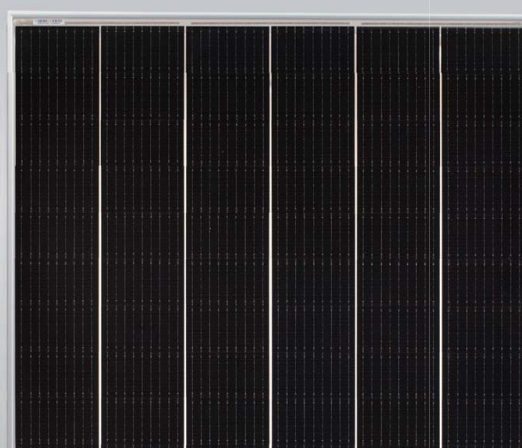


Tiger Mono-facial 450-470 Watt

Tiling Ribbon (TR) Technology

(Made in China)

N-Type



KEY FEATURES



TR technology + Half Cell

TR technology with Half cell aims to eliminate the cell gap to increase module efficiency (mono-facial up to 20.93%)



9BB instead of 5BB

9BB technology decreases the distance between bus bars and finger grid line which is benefit to power increase.



Higher lifetime Power Yield

1% first year degradation,
0.4% linear degradation



Best Warranty

15 year product warranty,
30 year linear power warranty



Better low-light performance

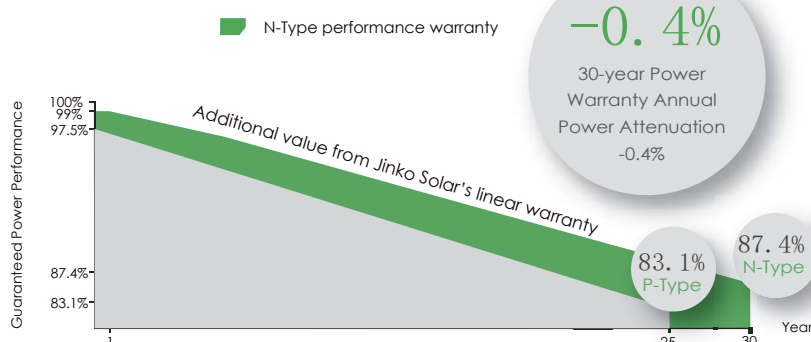
Excellent performance in low-light environments
(e.g. early morning, dusk, and cloud, etc.)



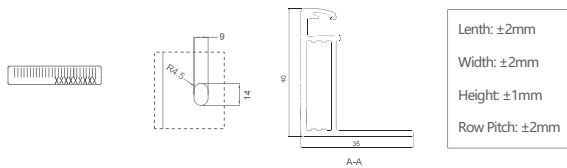
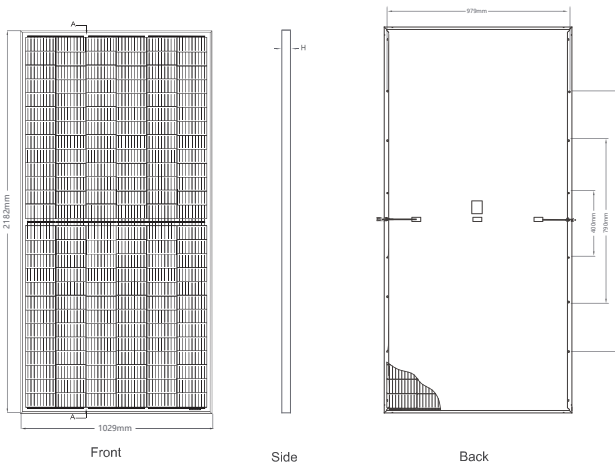
- ISO9001:2015, ISO14001:2015, OHSAS18001 certified factory
- IEC61215, IEC61730 certified product

LINEAR PERFORMANCE WARRANTY

15 Year Product Warranty 30 Year Linear Power Warranty
0.4% Annual Degradation Over 30 years



Engineering Drawings



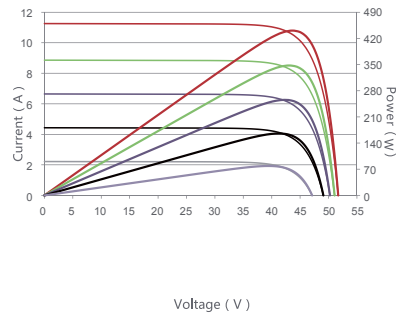
Packaging Configuration

(Two pallets = One stack)

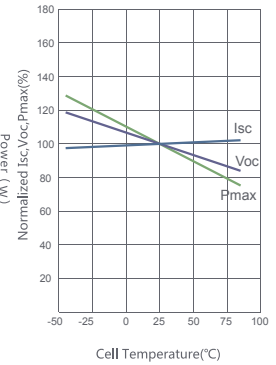
27pcs/pallets, 54pcs/stack, 540pcs/ 40'HQ Container

Electrical Performance & Temperature Dependence

Current-Voltage & Power-Voltage Curves (465W)



Temperature Dependence of Isc, Voc, Pmax



Mechanical Characteristics

Cell Type	N type Mono-crystalline
No. of cells	156 (2×78)
Dimensions	2182×1029×40mm (85.91×40.51×1.57 inch)
Weight	26.1 kg (57.54 lbs)
Front Glass	3.2mm, Anti-Reflection Coating, High Transmission, Low Iron, Tempered Glass
Frame	Anodized Aluminium Alloy
Junction Box	IP67 Rated
Output Cables	TUV 1×4.0mm ² (+): 290mm, (-): 145 mm or Customized Length
Connector Type	1000V: Staubli MC4, JKM03M/1B, JK03M2/1B, Jinko PV material 1500V: Staubli MC4-EVO2, JKM03M/2B, JK03M2/2B, Jinko PV material
Fire Class	Class C

SPECIFICATIONS

Module Type	JKM450N-7RL 3		JKM455N-7RL 3		JKM460N-7RL3		JKM465N-7RL 3		JKM470N-7RL 3	
	JKM450N-7RL 3-V		JKM455N-7RL 3-V		JKM460N-7RL3-V		JKM465N-7RL 3-V		JKM470N-7RL 3-V	
	STC	NOCT	STC	NOCT	STC	NOCT	STC	NOCT	STC	NOCT
Maximum Power (Pmax)	450Wp	336Wp	455Wp	339Wp	460Wp	343Wp	465Wp	347Wp	470Wp	350Wp
Maximum Power Voltage (Vmp)	43.52V	39.99V	43.75V	40.24V	43.98V	40.45V	44.21V	40.69V	44.43V	40.89V
Maximum Power Current (Imp)	10.34A	8.39A	10.40A	8.43A	10.46A	8.48A	10.52A	8.52A	10.58A	8.57A
Open-circuit Voltage (Voc)	53.25V	50.26V	53.50V	50.50V	53.75V	50.73V	54.00V	50.97V	54.25V	51.21V
Short-circuit Current (Isc)	11.05A	8.93A	11.11A	8.97A	11.17A	9.02A	11.22A	9.07A	11.28A	9.11A
Module Efficiency STC (%)	20.04%		20.26%		20.49%		20.71%		20.93%	
Operating Temperature(°C)	-40°C~-+85°C									
Maximum system voltage	1000/1500VDC (IEC) with -V=1500V, without -V=1000V									
Maximum series fuse rating	20A									
Power measurement tolerance	-3%~+3%									
Temperature coefficients of Pmax	-0.34%/°C									
Temperature coefficients of Voc	-0.28%/°C									
Temperature coefficients of Isc	0.048%/°C									
Nominal operating cell temperature (NOCT)	45±2°C									

* STC: Irradiance 1000W/m² Cell Temperature 25°C

AM=1.5

NOCT: Irradiance 800W/m² Ambient Temperature 20°C

AM=1.5

Wind Speed 1m/s

The company reserves the final right for explanation on any of the information presented hereby. TR JKM450-470N-7RL3-(V)-A1-EN