

TR P-type Mono-facial 78M 425-440 Watt

MONOCRYSTALLINE MODULE

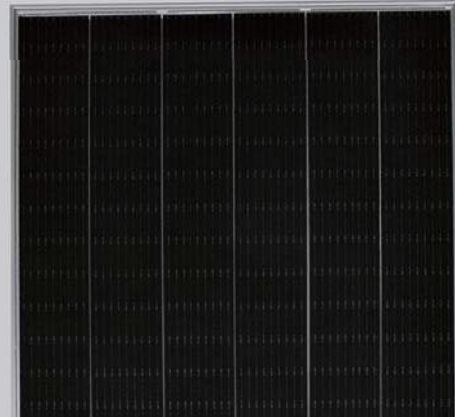
Positive power tolerance of 0~+3%

ISO9001:2015、ISO14001:2015、OHSAS18001
certified factory.

IEC61215、IEC61730 certified products.

(Made in China)

TR



KEY FEATURES



9 Busbar Solar Cell

Excellent ability to collect current, reduce the current loss of the cell



High Power Output

Module power increases to 440w, lower LCOE and higher IRR



Higher module Efficiency

Decreasing useless area effectively, module efficiency reaches to 20.87%

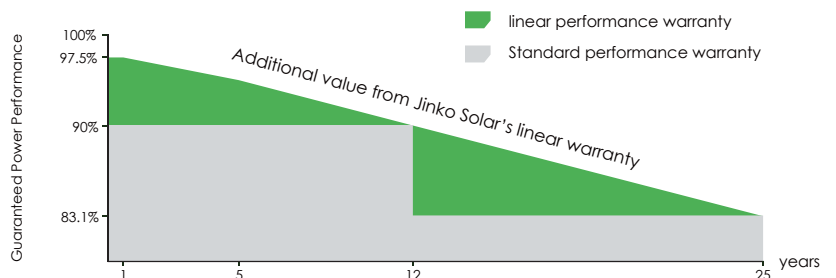


Higher Lifetime Power Yield

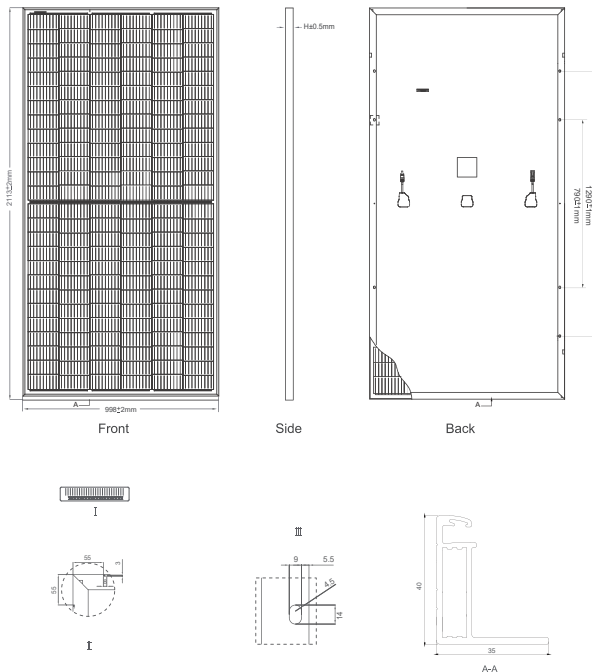
2.5% first year power degradation, 0.6% annual power degradation;
25 year linear power warranty

LINEAR PERFORMANCE WARRANTY

12 Year Product Warranty • 25 Year Linear Power Warranty
0.6% Annual Degradation Over 25 years



Engineering Drawings

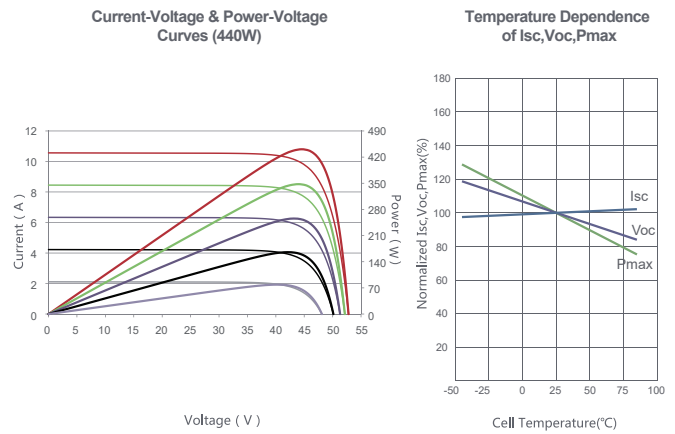


Packaging Configuration

(Two pallets = One stack)

27pcs/pallets, 54pcs/stack, 594pcs/ 40'HQ Container

Electrical Performance & Temperature Dependence



Mechanical Characteristics

Cell Type	P type Mono-crystalline 158.75×158.75mm
No. of cells	156 (6×26)
Dimensions	2113×998×40mm (83.19×39.29×1.57 inch)
Weight	24kg (52.91lbs)
Front Glass	3.2mm, Anti-Reflection Coating, High Transmission, Low Iron, Tempered Glass
Frame	Anodized Aluminium Alloy
Junction Box	IP67 Rated
Output Cables	TUV 1×4.0mm ² (+): 290mm, (-): 145mm or customized length
Connector	Jinko JK03M, Genuine MC4

SPECIFICATIONS

Module Type	JKSM3-DACA-425		JKSM3-DACA-430		JKSM3-DACA-435		JKSM3-DACA-440	
	STC	NOCT	STC	NOCT	STC	NOCT	STC	NOCT
Maximum Power (Pmax)	425Wp	316Wp	430Wp	319Wp	435Wp	323Wp	440Wp	327Wp
Maximum Power Voltage (Vmp)	43.73V	40.35V	43.88V	40.61V	44.03V	40.83V	44.18V	41.04V
Maximum Power Current (Imp)	9.72A	7.82A	9.80A	7.86A	9.88A	7.91A	9.96A	7.96A
Open-circuit Voltage (Voc)	52.50V	49.45V	52.60V	49.54V	52.70V	49.64V	52.80V	49.73V
Short-circuit Current (Isc)	10.29A	8.31A	10.35A	8.36A	10.41A	8.41A	10.47A	8.46A
Module Efficiency STC (%)	20.15%		20.39%		20.63%		20.87%	
Operating Temperature(°C)	-40°C~+85°C							
Maximum system voltage	1500VDC (IEC)							
Maximum series fuse rating	20A							
Power tolerance	0~+3%							
Temperature coefficients of Pmax	-0.36%/°C							
Temperature coefficients of Voc	-0.29%/°C							
Temperature coefficients of Isc	0.048%/°C							
Nominal operating cell temperature (NOCT)	45±2°C							

* STC: Irradiance 1000W/m² Cell Temperature 25°C AM=1.5

NOCT: Irradiance 800W/m² Ambient Temperature 20°C AM=1.5 Wind Speed 1m/s

* Power measurement tolerance: ± 3%

The company reserves the final right for explanation on any of the information presented hereby.

TR JKSM3-DACA-425-445-A1-EN-for CEC Listing