

FRONT

BACK

TOPBiHiKu6

N-type Bifacial TOPCon Technology

570 W ~ 630 W

CS6.2-66TB-570 | 575 | 580 | 585 | 590 | 595 | 600 | 605 | 610 | 615 | 620 | 625 | 630 (IEC1500 V)

MORE POWER



Module power up to 630 W
Module efficiency up to 23.3 %



Up to 85% Power Bifaciality,
more power from the back side



Excellent anti-LeTID & anti-PID performance.
Low power degradation, high energy yield



Lower temperature coefficient (Pmax): -0.29%/°C,
increases energy yield in hot climate



Lower LCOE & system cost

MORE RELIABLE



Tested up to ice ball of 35 mm diameter
according to IEC 61215 standard



Minimizes micro-crack impacts



Heavy snow load up to 5400 Pa,
wind load up to 2400 Pa*



Enhanced Product Warranty on Materials
and Workmanship*



Linear Power Performance Warranty*

1st year power degradation no more than 1%
Subsequent annual power degradation no more than 0.4%

*According to the applicable Canadian Solar Limited Warranty Statement.

MANAGEMENT SYSTEM CERTIFICATES*

ISO 9001: 2015 / Quality management system
ISO 14001: 2015 / Standards for environmental management system
ISO 45001: 2018 / International standards for occupational health & safety
IEC 62941: 2019 / Photovoltaic module manufacturing quality system

PRODUCT CERTIFICATES*

IEC 61215 / IEC 61730 / CE / MCS / UKCA / INMETRO / CGC
UL 61730 / IEC 61701 / IEC 62716 / IEC 60068-2-68
UNI 9177 Reaction to Fire: Class 1 / Take-e-way



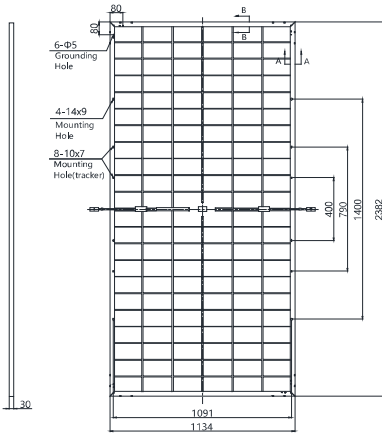
* The specific certificates applicable to different module types and markets will vary, and therefore not all of the certifications listed herein will simultaneously apply to the products you order or use. Please contact your local Canadian Solar sales representative to confirm the specific certificates available for your Product and applicable in the regions in which the products will be used.

CSI Solar Co., Ltd. is committed to providing high quality solar photovoltaic modules, solar energy and battery storage solutions to customers. The company was recognized as the No. 1 module supplier for quality and performance/price ratio in the IHS Module Customer Insight Survey. Over the past 23 years, it has successfully delivered over 125 GW of premium-quality solar modules across the world.

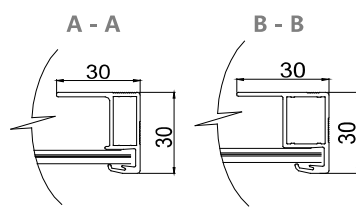
* For detailed information, please refer to the Installation Manual.

ENGINEERING DRAWING (mm)

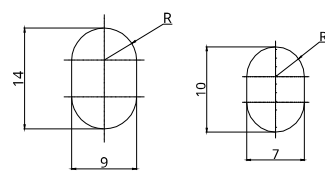
Rear View



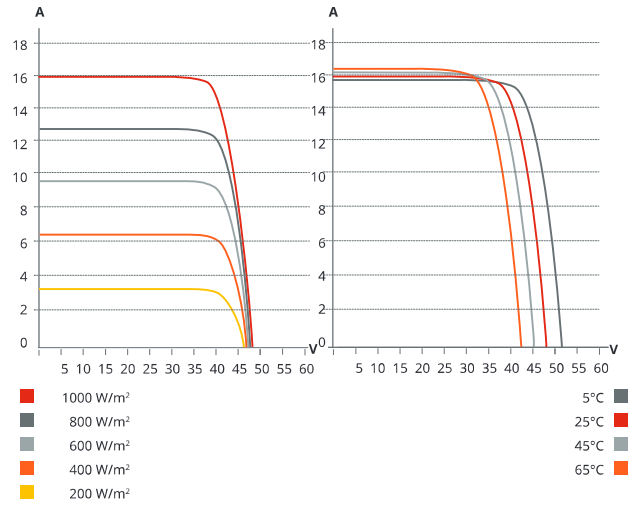
Frame Cross Section



Mounting Hole



CS6.2-66TB-610 / I-V CURVES



ELECTRICAL DATA (STC & NMOT & BNPI) | CS6.2-66TB-xxx (xxx=570-595)

Testing Conditions	STC	NMOT	BNPI	STC	NMOT	BNPI	STC	NMOT	BNPI	STC	NMOT	BNPI	STC	NMOT	BNPI	STC	NMOT	BNPI
Nominal Max. Power - Pmax (Wp)	570	431	632	575	435	637	580	439	643	585	442	648	590	446	654	595	450	659
Opt. Operating Voltage - Vmp (V)	39.2	37.1	#	39.4	37.3	#	39.6	37.4	#	39.8	37.6	#	40.0	37.8	#	40.2	38.0	#
Opt. Operating Current - Imp (A)	14.56	11.63	#	14.61	11.67	#	14.66	11.72	#	14.71	11.76	#	14.76	11.80	#	14.81	11.84	#
Open Circuit Voltage - Voc (V)	46.4	43.9	46.7	46.6	44.1	46.9	46.8	44.3	47.1	47.0	44.5	47.3	47.2	44.7	47.5	47.4	44.9	47.7
Short Circuit Current - Isc (A)	15.49	12.49	17.16	15.55	12.54	17.23	15.61	12.59	17.30	15.67	12.64	17.36	15.73	12.68	17.43	15.79	12.73	17.50
Module Efficiency (%)		21.1		21.3		21.5		21.7		21.8		22.0						

* STC: Irradiance of 1000 W/m², spectrum AM 1.5 and cell temperature of 25°C. NMOT: Irradiance of 800 W/m², spectrum AM 1.5, ambient temperature 20°C, wind speed 1 m/s. Measurement uncertainty: ±3 % (Pmax). Measurement uncertainty: ±3 % (Pmax).

**BNPI: Irradiance of front 1000W/m², rear 135W/m².

MECHANICAL DATA

Specification	Data
Cell Type	TOPCon cells
Cell Arrangement	132 [2 x (11 x 6)]
Dimensions	2382 x 1134 x 30 mm (93.8 x 44.6 x 1.18 in)
Weight	32.8 kg (72.3 lbs)
Front Glass	2.0 mm heat strengthened glass with anti-reflective coating
Back Glass	2.0 mm heat strengthened glass
Frame	Anodized aluminium alloy
J-Box	IP68, 3 bypass diodes
Cable	4.0 mm ² (IEC), 12 AWG (UL)
Cable Length (Including Connector)	300 mm (11.8 in) (+) / 200 mm (7.9 in) (-) or customized length*
Connector	Tlian: T6 Stäubli: PV-KST4-EVO2/XY, PV-KBT4-EVO2/XY or PV-KST4-EVO2A/XY, PV-KBT4-EVO2A/XY
Per Pallet	36 pieces
Per Container (40' HQ)	720 pieces

* For detailed information, please contact your local Canadian Solar sales and technical representatives.

TEMPERATURE CHARACTERISTICS

Specification	Data
Temperature Coefficient (Pmax)	-0.29 % / °C
Temperature Coefficient (Voc)	-0.25 % / °C
Temperature Coefficient (Isc)	0.05 % / °C
Nominal Module Operating Temperature	41 ± 3°C

ELECTRICAL DATA

Operating Temperature	-40°C ~ +85°C
Max. System Voltage	1500 V (IEC/UL)
Module Fire Performance	TYPE 29 (UL 61730) or CLASS C (IEC61730)
Max. Series Fuse Rating	35 A
Protection Class	Class II
Power Tolerance	0 ~ + 10 W
Power Bifaciality*	80 %

* Power Bifaciality = Pmax_{rear} / Pmax_{front}, both Pmax_{rear} and Pmax_{front} are tested under STC. Bifaciality coefficient (±5%): φVoc=99%, φIsc=80%, φPmax=80%.

* The specifications and key features contained in this datasheet may deviate slightly from our actual products due to the on-going innovation and product enhancement. CSI Solar Co., Ltd. reserves the right to make necessary adjustment to the information described herein at any time without further notice.

Please be kindly advised that PV modules should be handled and installed by qualified people who have professional skills and please carefully read the safety and installation instructions before using our PV modules.

PARTNER SECTION



Canadian Solar MSS (Australia) Pty Ltd.

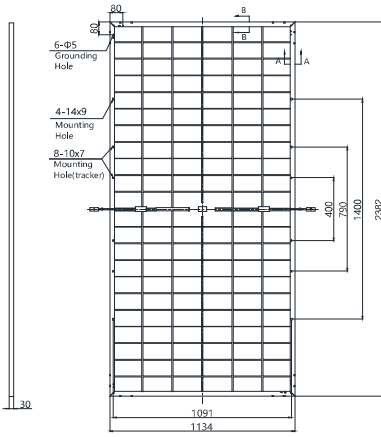
Level 27, 101 Collins Street, Melbourne VIC 3000, Australia, sales.au@csisolar.com, www.csisolar.com/au

August 2024. All rights reserved, PV Module Product Datasheet V1.3C2_AU

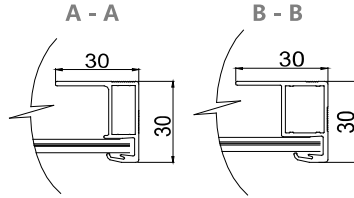
* Manufactured and assembled in China and Thailand.

ENGINEERING DRAWING (mm)

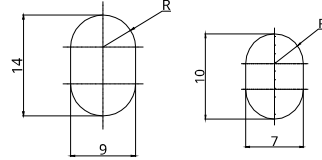
Rear View



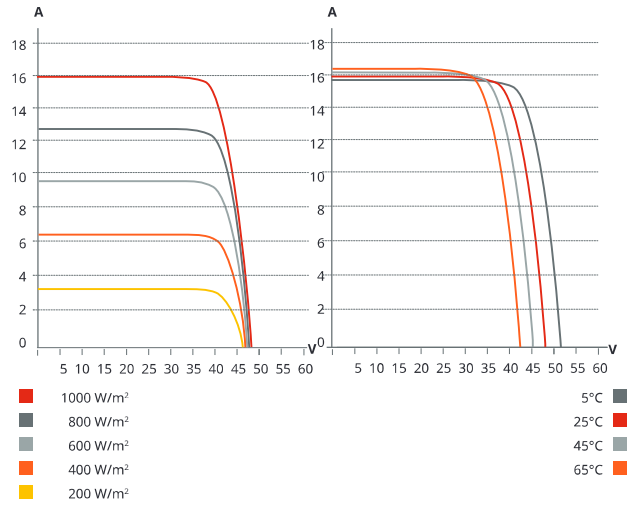
Frame Cross Section



Mounting Hole



CS6.2-66TB-610 / I-V CURVES



ELECTRICAL DATA (STC & NMOT & BNPI) | CS6.2-66TB-xxx (xxx=600-630)

Testing Conditions	STC	NMOT	BNPI	STC	NMOT	BNPI	STC	NMOT	BNPI	STC	NMOT	BNPI	STC	NMOT	BNPI	STC	NMOT	BNPI			
Nominal Max. Power - Pmax (Wp)	600	454	665	605	458	670	610	461	676	615	465	681	620	469	687	625	473	693	630	476	698
Opt. Operating Voltage - Vmp (V)	40.4	38.2	#	40.6	38.4	#	40.8	38.6	#	41.0	38.8	#	41.2	39.0	#	41.4	39.1	#	41.6	39.3	#
Opt. Operating Current - Imp (A)	14.86	11.88	#	14.91	11.92	#	14.96	11.96	#	15.01	12.00	#	15.06	12.04	#	15.11	12.08	#	15.16	12.11	#
Open Circuit Voltage - Voc (V)	47.6	45.1	47.9	47.8	45.3	48.1	48.0	45.4	48.3	48.2	45.6	48.5	48.4	45.8	48.7	48.6	46.0	48.9	48.8	46.2	49.1
Short Circuit Current - Isc (A)	15.85	12.78	17.56	15.91	12.83	17.63	15.97	12.88	17.69	16.02	12.92	17.75	16.08	12.97	17.82	16.14	13.02	17.88	16.20	13.06	17.95
Module Efficiency (%)	22.2			22.4			22.6			22.8			23.0			23.1			23.3		

* STC: Irradiance of 1000 W/m², spectrum AM 1.5 and cell temperature of 25°C. NMOT: Irradiance of 800 W/m², spectrum AM 1.5, ambient temperature 20°C, wind speed 1 m/s. Measurement uncertainty: ±3% (Pmax). Measurement uncertainty: ±3% (Pmax).

**BNPI: Irradiance of front 1000W/m², rear 135W/m².

MECHANICAL DATA

Specification	Data
Cell Type	TOPCon cells
Cell Arrangement	132 [2 x (11 x 6)]
Dimensions	2382 x 1134 x 30 mm (93.8 x 44.6 x 1.18 in)
Weight	32.8 kg (72.3 lbs)
Front Glass	2.0 mm heat strengthened glass with anti-reflective coating
Back Glass	2.0 mm heat strengthened glass
Frame	Anodized aluminium alloy
J-Box	IP68, 3 bypass diodes
Cable	4.0 mm ² (IEC), 12 AWG (UL)
Cable Length (Including Connector)	300 mm (11.8 in) (+) / 200 mm (7.9 in) (-) or customized length*
Connector	Tlian: T6 Stäubli: PV-KST4-EVO2/XY, PV-KBT4-EVO2/XY or PV-KST4-EVO2A/XY, PV-KBT4-EVO2A/XY
Per Pallet	36 pieces
Per Container (40' HQ)	720 pieces

* For detailed information, please contact your local Canadian Solar sales and technical representatives.

TEMPERATURE CHARACTERISTICS

Specification	Data
Temperature Coefficient (Pmax)	-0.29 % / °C
Temperature Coefficient (Voc)	-0.25 % / °C
Temperature Coefficient (Isc)	0.05 % / °C
Nominal Module Operating Temperature	41 ± 3°C

ELECTRICAL DATA

Operating Temperature	-40°C ~ +85°C
Max. System Voltage	1500 V (IEC/UL)
Module Fire Performance	TYPE 29 (UL 61730) or CLASS C (IEC61730)
Max. Series Fuse Rating	35 A
Protection Class	Class II
Power Tolerance	0 ~ + 10 W
Power Bifaciality*	80 %

* Power Bifaciality = $P_{max_rear} / P_{max_front}$, both P_{max_rear} and P_{max_front} are tested under STC. Bifaciality coefficient (±5%): $\phi Voc=99\%$, $\phi Isc=80\%$, $\phi Pmax=80\%$.

* The specifications and key features contained in this datasheet may deviate slightly from our actual products due to the on-going innovation and product enhancement. CSI Solar Co., Ltd. reserves the right to make necessary adjustment to the information described herein at any time without further notice.

Please be kindly advised that PV modules should be handled and installed by qualified people who have professional skills and please carefully read the safety and installation instructions before using our PV modules.

Canadian Solar MSS (Australia) Pty Ltd.

Level 27, 101 Collins Street, Melbourne VIC 3000, Australia, sales.au@csisolar.com, www.csisolar.com/au

PARTNER SECTION

